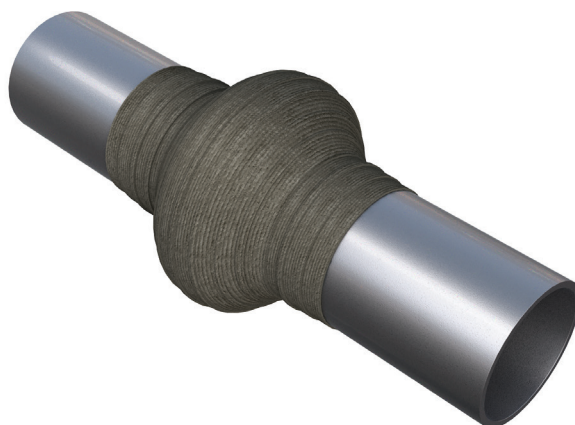


## APPLICATION GUIDE

These application instructions outline the correct application of Denso products for P1 specifications for the protection of ferrous pipes, joints and fittings within the water industry.



### SCOPE

These application instructions are prepared by Winn & Coales (Denso) Ltd in accordance with 'Civil Engineering Specification for the Water Industry – 7<sup>th</sup> Edition.'

### EQUIPMENT AND TRAINING

- Wire brush for surface preparation.
- Brushes required for the application of Denso Paste™.
- PPE must be worn in accordance with the manufacturer's recommendations as set out in the Safety Data Sheets.

No special training is normally required for applicators. It is recommended that the applicators are competent in general building practices.

### COMPONENTS (IN SEQUENCE OF APPLICATION)

1. Denso Paste™
2. Denso Profiling Mastic™
3. Denso™ Tape

#### IMPORTANT:

Winn & Coales (Denso) Ltd pursue a policy to develop and continually improve all of our products and therefore information given in this data sheet is intended as a general guide and does not constitute a warranty or specification. However, our sales personnel are committed to assisting the user in establishing the suitability of the product for its intended purpose and additional specific information is available on request. These Instructions may not cover all circumstances and must be read in conjunction with the project specifications. For further advice contact Winn & Coales (Denso) Ltd.

## 1. SURFACE PREPARATION

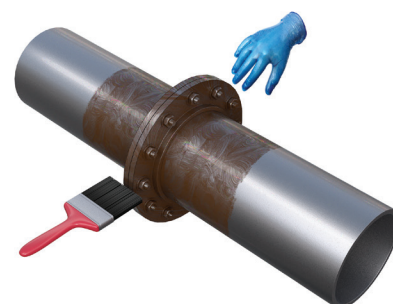
Clean the joint and adjacent pipe thoroughly so that they are free from loose scale, rust, dirt etc.

Ensure the joint and adjacent pipe are as dry as possible before the application of the system.



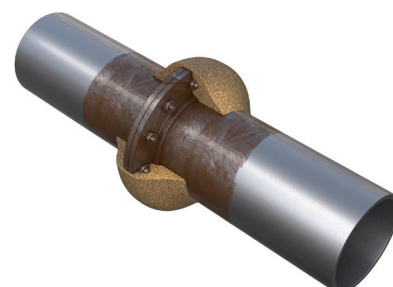
## 2. METHOD OF APPLICATION

Using a stiff brush or gloved hand apply Denso Paste™ to the joint and surrounding pipe making sure all surfaces are covered with a thin continuous coating.



## 3. DENSO PROFILING MASTIC

Then apply Denso Profiling Mastic™, working into all hollows and voids to create a smooth contour for tape wrapping.



## 4. DENSO TAPE

Next spirally wrap Denso™ Tape with tension making sure a 55% overlap is achieved which ensures a double wrap at all areas. Be sure to start from the middle of the joint, complete a circumferential wrap and continue wrapping towards the pipe on one side and then repeat on the other side.

Smooth out all air pockets and wrinkles.

On each side of the joint or fitting the tape shall extend along 150mm of the barrel of the pipe

